

HOW TO CREATE A PRINT-READY FILE:

CUTOUTS

The following instructions are designed to help you create a print-ready file. If after reading them you are still unsure about anything, please download the template, request a professional File Check or contact customer support.

1 FILE FORMAT

Our systems can only process files in PDF format and in 1:1 scale (not password-protected).

2 COLOURS

All files must be sent in CMYK (cyan, magenta, yellow and black), with a Fogra 39 colour profile. Any images which are sent in RGB or in PANTONE colours will be automatically converted using a standard separation profile.

3 RESOLUTION

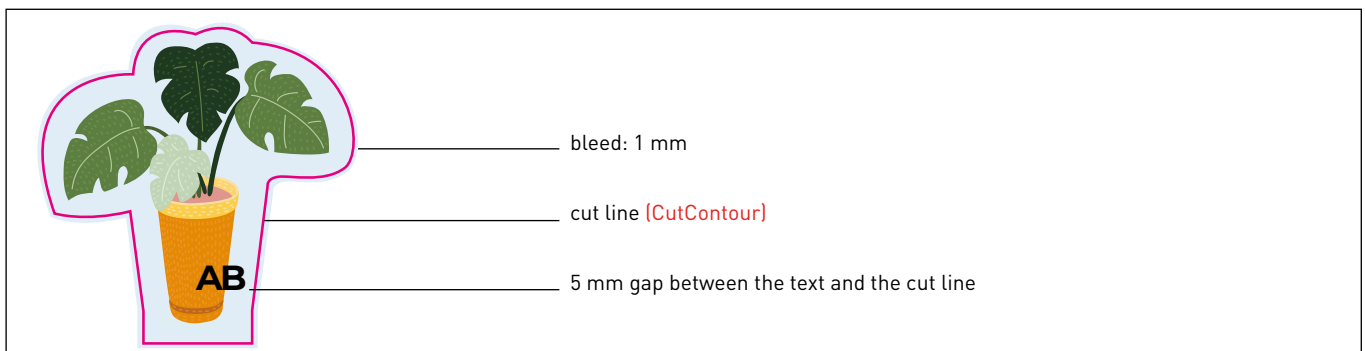
The optimal resolution for the print files is between 100 and 150 dpi.

4 FONTS

Fonts should be embedded in the PDF or converted into curves/paths. The minimum font size (below which we cannot guarantee perfect print quality) is 6 pt.

5 MARGINS AND BLEED

A 1 mm bleed on each side is required for a print-ready file. Leave a minimum of 5 mm between the text and the cut line.



6 TEMPLATE

To create a print-ready file for these products you must download the template from the website. Insert the artwork on the **Artwork** layer and the cut line on the **CutContour** layer, delete the guidelines, except the green line and the **CutContour** line, and resave as a PDF. This will ensure your file prints correctly. Remember not to alter the scale of the artwork or to resize the template. **Do not use the spot colours Artios_Cut and Artios_Taglio when designing your artwork (they will not be printed).**

If you're unsure how to create a print-ready file, follow these steps:

- Download the template generated by the data entered on the website.
- Enter your **artwork on the Artwork layer**.
- Create a vector outline on the **CutContour** layer which corresponds to the cut line for your cutout, and assign it a stroke colour that corresponds to the newly-created **CutContour** swatch.
- Save the file as a PDF, keeping the layers separate.

CutContour stroke colour

Using Illustrator:
Window > Swatches > New Swatch

name it **CutContour** (not CUTCONTOUR or cutcontour)

colour type: Spot Colour

Colour mode: CMYK

C: 0%
M: 100%
Y: 0%
K: 0%

cut line:
CutContour vector outline

Save the PDF in high quality, without downsampling and keeping the layers separate.

We recommend that you do not create overly complex cut lines, as this could cause the cut to be inaccurate or uneven. The outer CutContour line must consist of a single, closed line.

✓

✗

✗

✗

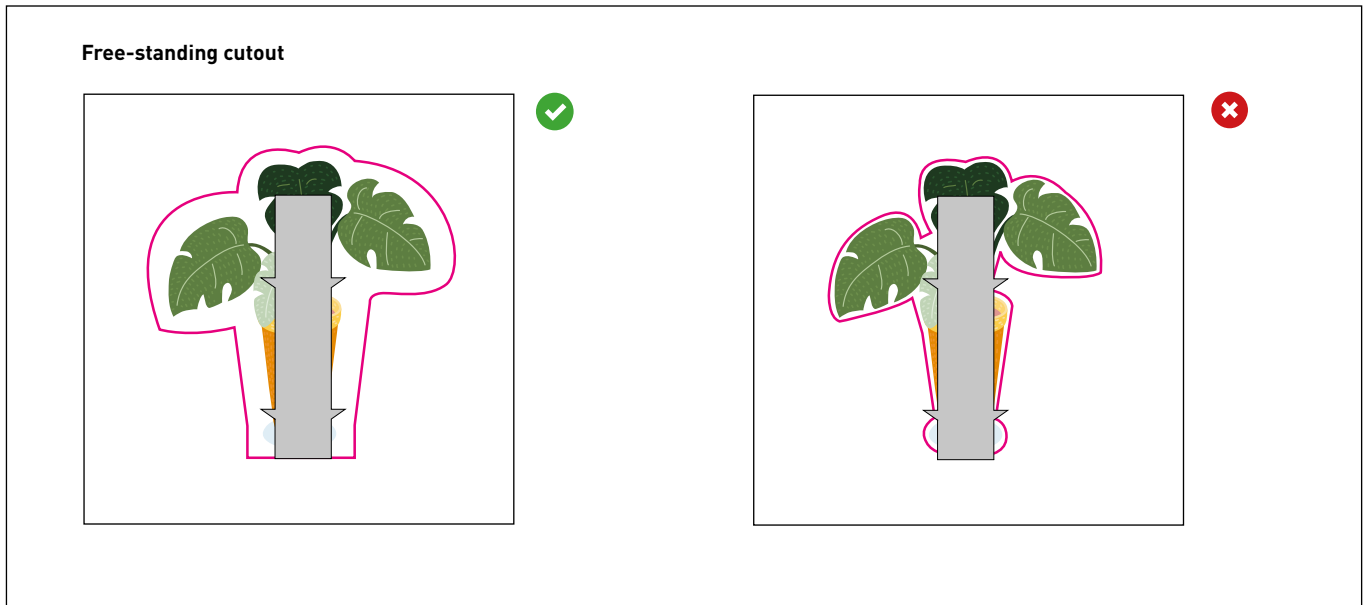
too complex

internal angles < 90°

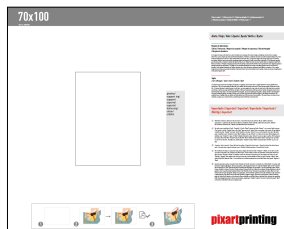
multiple cuts

7 ADDITIONAL INFORMATION

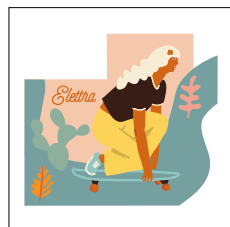
You'll find a grey rectangle in the template you downloaded. This is the outline of the leg when folded out. You can use it to get an idea of its size and create your artwork based on this. Remember, when the leg is placed behind the cutout, it may be visible from the front. You will not receive a non-compliance notification in this case because it is not considered to be an error.



GOOD TO KNOW - Cutouts




DOWNLOAD
THE TEMPLATE




INSERT YOUR
ARTWORK




ADD YOUR CUT
LINE




SAVE
THE PDF


PRINTED
RESULT

 PDF

 100-150 dpi

 CMYK

 FOGRA 39

8 CUTOUT SUPPORT LEG ASSEMBLY

