

## INSTRUCTIONS ON HOW TO CREATE A CORRECT FILE FOR TOTEMS AND DISPLAY UNITS

The following instructions are designed to help you create a proper printing file. If still in doubt, please download the template, visit our web site at the FAQ section, activate the File Verification with an operator or call our Support Service.

### 1 FILE FORMAT

Our systems only process PDF format files - not password protected.

### 2 COLOUR

All the colours are in CMYK (Cyan, Magenta, Yellow and Black) with the printing profile in Fogra 39. Images in RGB or with PANTONE colours shall be automatically converted with the standard separation profile.

### 3 RESOLUTION

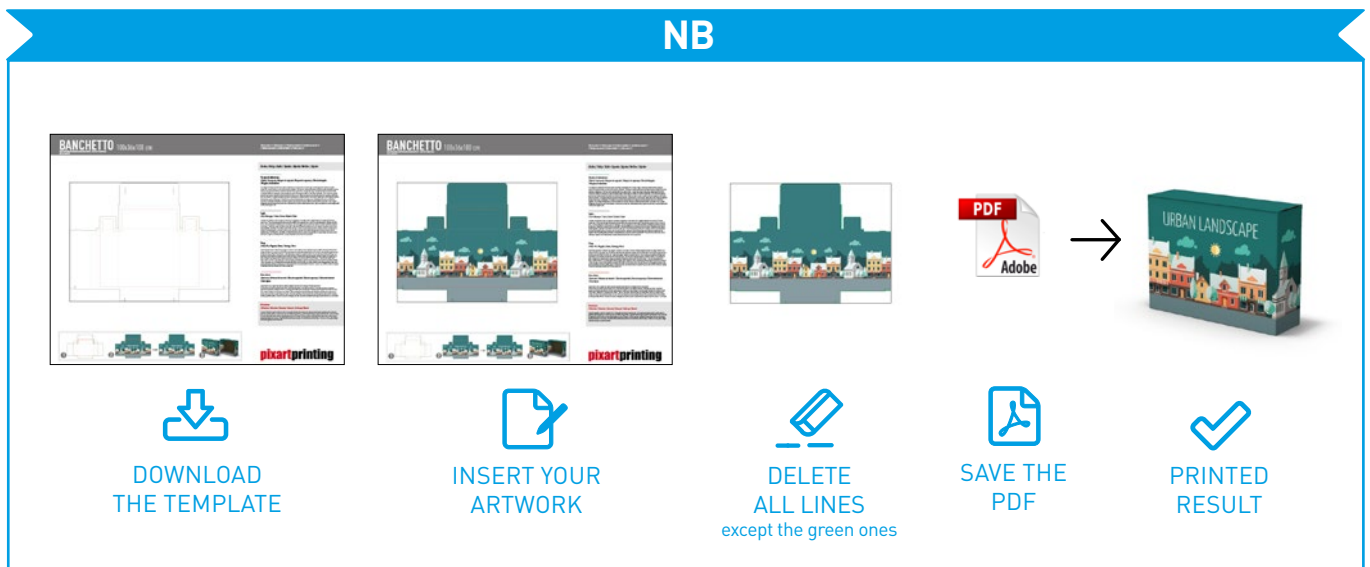
The best resolution for the printing file is between 250 and 300 dpi.

### 4 TEMPLATE

We recommend to download the template from the web site, add your own graphics, eliminate all guide lines except for the green ones and save it again in PDF. This way the saved file will be correct. Be careful not to place graphics in the bleed area, as they will not show on the finished product.

Remember NOT to modify the design scale and NOT to re-dimension the template.

**Do not use spot colors Artios\_Cut, Artios\_Crease and Artios\_Taglio.**



### 5 ADDITIONAL INFORMATION

The minimum printable line width is 0.5 pt. The minimum printable font size is 12 pt.

We advise against positioning frames and mounts along the edges, as this may cause irregular cutting around the perimeter.

