

HOW TO CREATE A PRINT-READY FILE:

CARDBOARD ENVELOPES

The following instructions are designed to help you create a print-ready file. If after reading them you are still unsure about anything, please download the template, visit the FAQ section of our website, request a professional File Check or contact customer support.

1 FILE FORMAT

Our systems can only process files in PDF format and in 1:1 scale (not password-protected).

2 COLOURS

All files should be sent in CMYK (cyan, magenta, yellow, black), with the Fogra 39 colour profile .

Images in RGB or with PANTONE colours will be converted automatically using a standard colour separation profile.

3 RESOLUTION

The optimal resolution for the print files is between 250 and 300 ppi.

4 MARGINS AND BLEED

Download the template for the product you have purchased; the required bleed of 5 mm will already be in place.

Leave a minimum of 3 mm between the text and the cut line.

5 TEMPLATE

Download the template for your product from the website and use it as the basis for positioning your artwork.

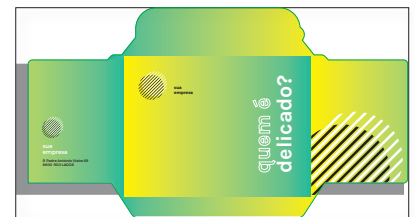
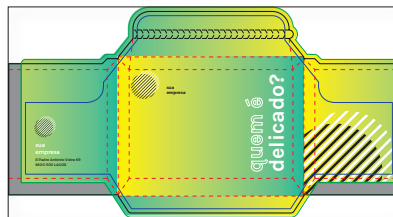
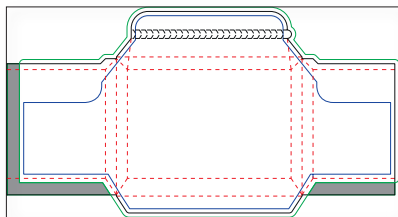
You will find the dimensions you gave when ordering, the bleed and other guidelines already correctly set up.

Insert your artwork and delete the guidelines and fold and cut lines, leaving only the bleed margin.

Finally, save the file as a high-quality PDF without crop marks.

If you have selected any other options, follow the instructions given in the following paragraphs.

GOOD TO KNOW - Four-colour printing



DOWNLOAD
THE TEMPLATE



INSERT YOUR ARTWORK
on the Artwork layer



DELETE ALL GUIDELINES
except the green line



SAVE THE PDF



PRINTED RESULT



PDF



250-300 ppi



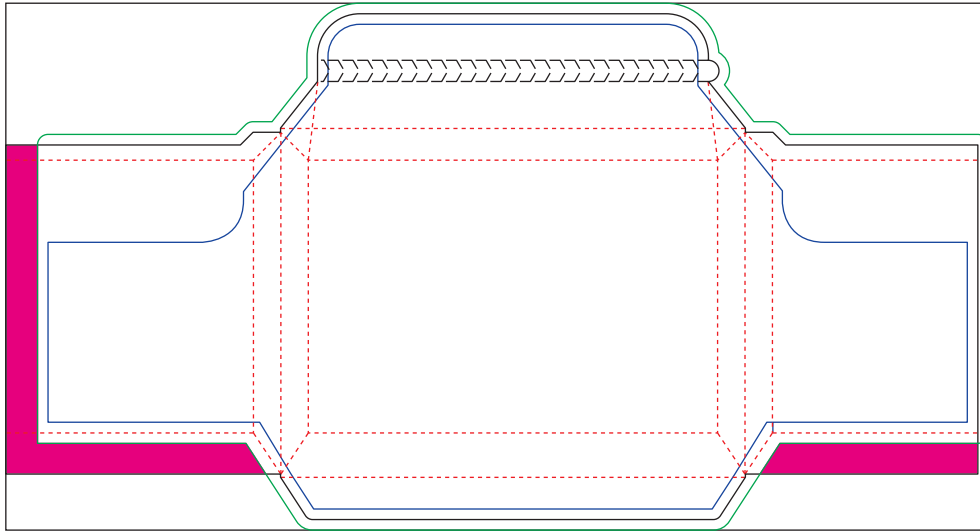
CMYK



FOGRA 39

GOOD TO KNOW - Glued sections

To ensure the best possible adhesion, we recommend not placing artwork on the specific glued sections.



 GLUED SECTION



Do not alter the scale of the drawing or resize the template.

6 ADDITIONAL INFORMATION

The minimum printable line weight is 0.25 pt.