

## INSTRUCTIONS FOR CREATING A PRINT-READY FILE - BOOKS

The following instructions are designed to help you create a print-ready file. If after reading them you are still unsure about anything, visit the [FAQ](#) section of our website, request a professional File Verification or contact customer support.

### 1 FILE FORMAT

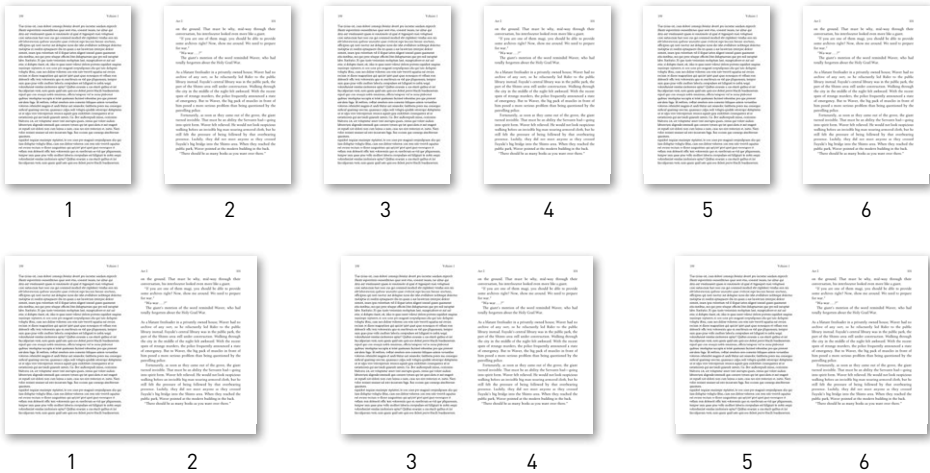
Our systems can only process files in PDF format and in 1:1 scale (not password-protected).

The PDF must be exported **without crop marks nor trim line**.

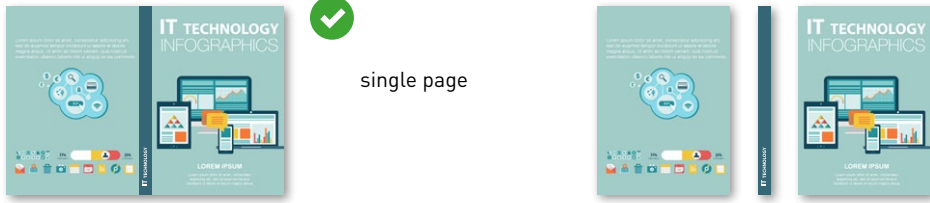
- **For the inside pages**, the PDF should contain single pages and be in reading order. PDFs containing spreads will not be accepted.
- **For the cover**, prepare a single-page PDF for the whole cover spread (see point 7 for further details).

Once you have inserted the format and the number of internal sides, **the order form will automatically calculate the correct dimensions for the spine**.

Inside pages



Cover



### 2 COLOURS

The inside pages of the 'Books' products are printed in a single colour, black, with an output particularly suited for printing text. The cover, meanwhile, is printed using four-colour printing.

**All files must be sent in CMYK (cyan, magenta, yellow and black), with a Fogra 39 colour profile. The black on the inside pages must have the following CMYK values: 0, 0, 0, 100.**

Images provided in RGB or PANTONE colours will be automatically converted using a standard colour separation profile if they are on the cover, or using grayscale if they are on the inside pages.

The same colour can appear slightly different depending on the media. This is due to the paper's physical composition.

### 3 RESOLUTION

The optimal resolution for the print files is **300 dpi**.

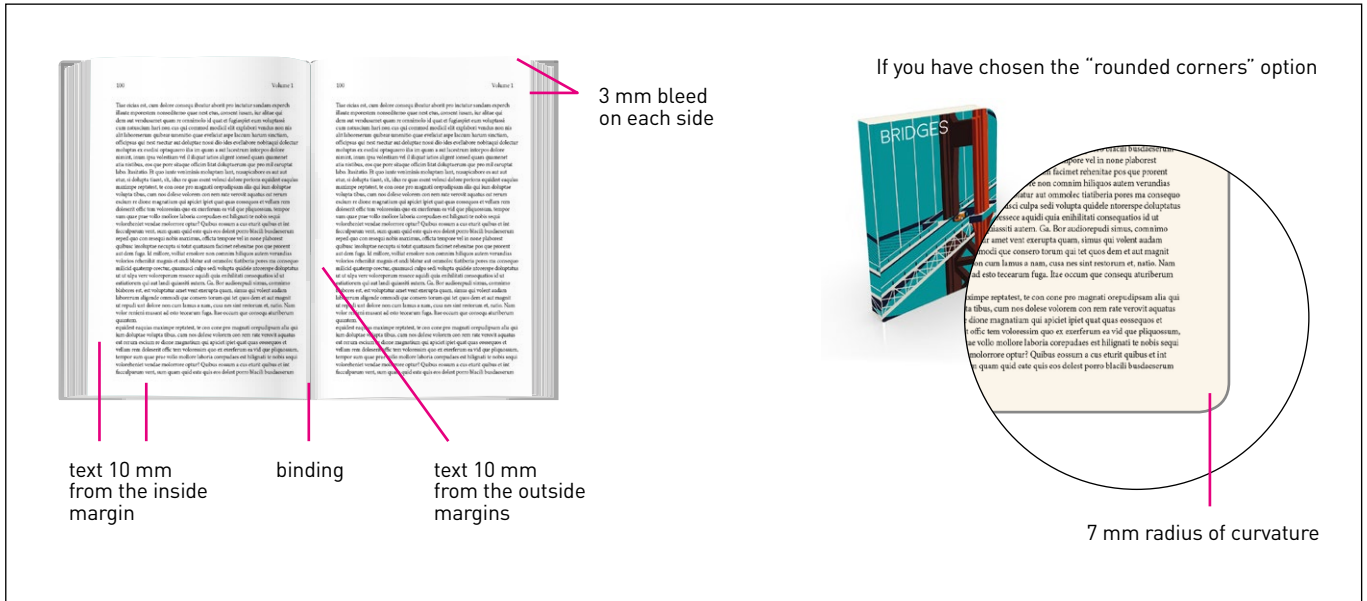
### 4 FONTS AND OUTLINES

Fonts should be embedded in the PDF or converted into vector paths. The minimum font size (below which we cannot guarantee perfect print quality) is **6 pt**. The minimum printable line weight is **0.25 pt**.

## 5 MARGINS AND BLEEDS

Each page must have a **3 mm bleed on each side**. In addition, we recommend that all text is positioned at least 10 mm from the inside margins, to avoid it being difficult to read or too close to the binding.

**If you have chosen a book with rounded corners**, remember that the radius of curvature is 7 mm when positioning graphics or text near the corners.



## 6 NUMBER OF SIDES AND PAGES

The number to give when ordering is the number of sides in the book, excluding the cover: each page has two sides, i.e. the front and back.

## 7 CREATING THE COVER

For the cover, create a spread with a 3 mm bleed on each side, with the outside back cover on the left, the front cover on the right, and the spine in the middle, with the dimensions given on the website. Save the file as a PDF. Remember that you cannot print the inside front and back covers on this product.

Cover

3 mm bleed on each side

GET YOUR QUOTE	
Format	15 x 21 cm
Number of sides (min. 80 sides)	80
Spine (mm)	6.00

back cover spine front cover

Once you have inserted the format and the number of internal sides, the order form will automatically calculate the correct dimensions for the spine.

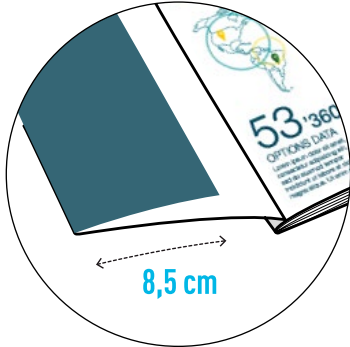
In the example shown above, the total dimensions of the document would be:  
width: 150+150 mm + 6 mm (spine) + 3+3 mm (bleed) = 31.2 cm | height: 21 cm + 3+3 mm (bleed)= 21.6 cm

## 8 COVER WITH FLAPS

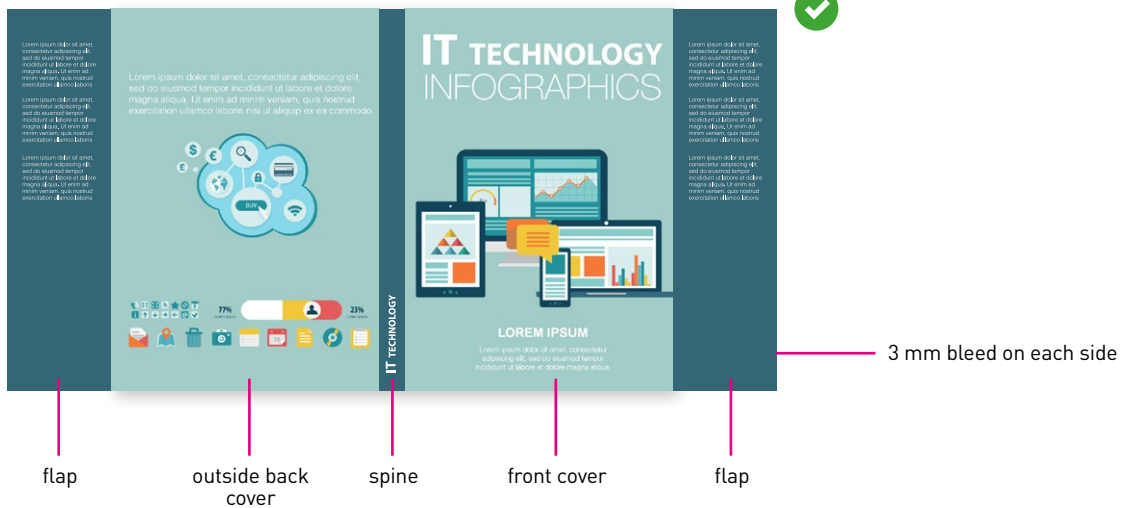
If you have chosen the cover "with flaps", remember that these **are always 8.5 cm wide**. Add the flaps to the cover spread, one on the left and one on the right, as shown in the diagram below.

**PLEASE NOTE:** It is not possible to create a book with both rounded corners and flaps.

Flap dimensions (in cm)



Cover with flaps

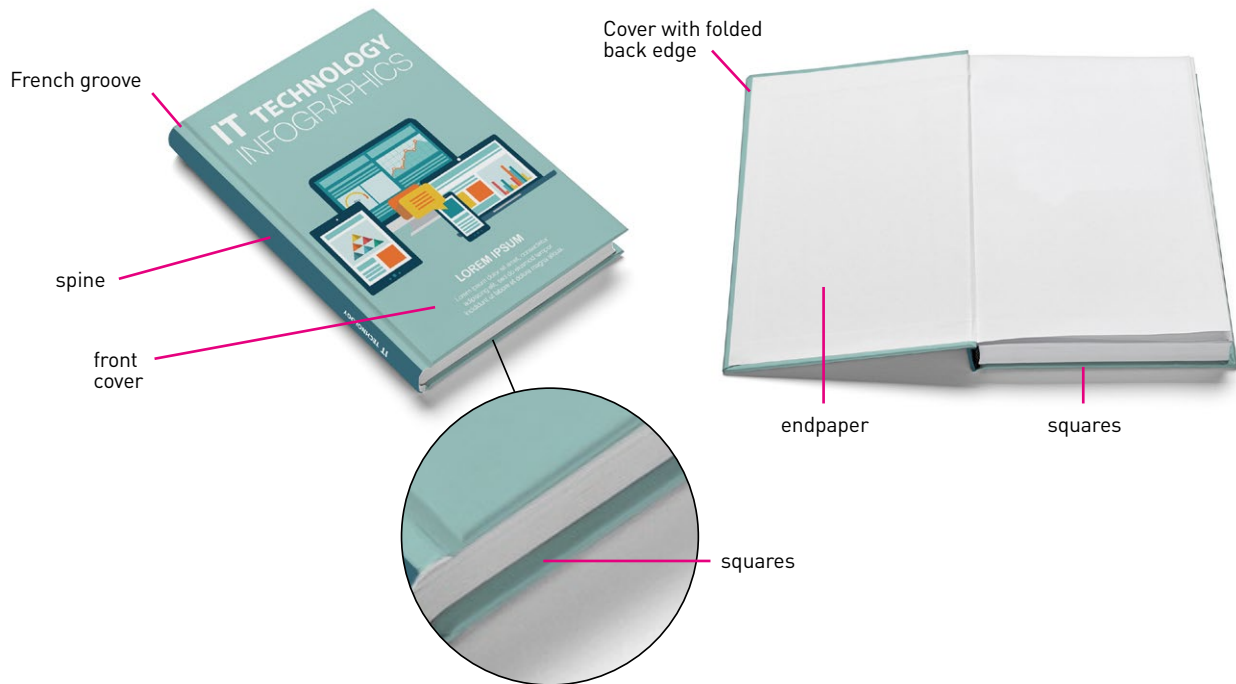


## 9 CASE BINDING

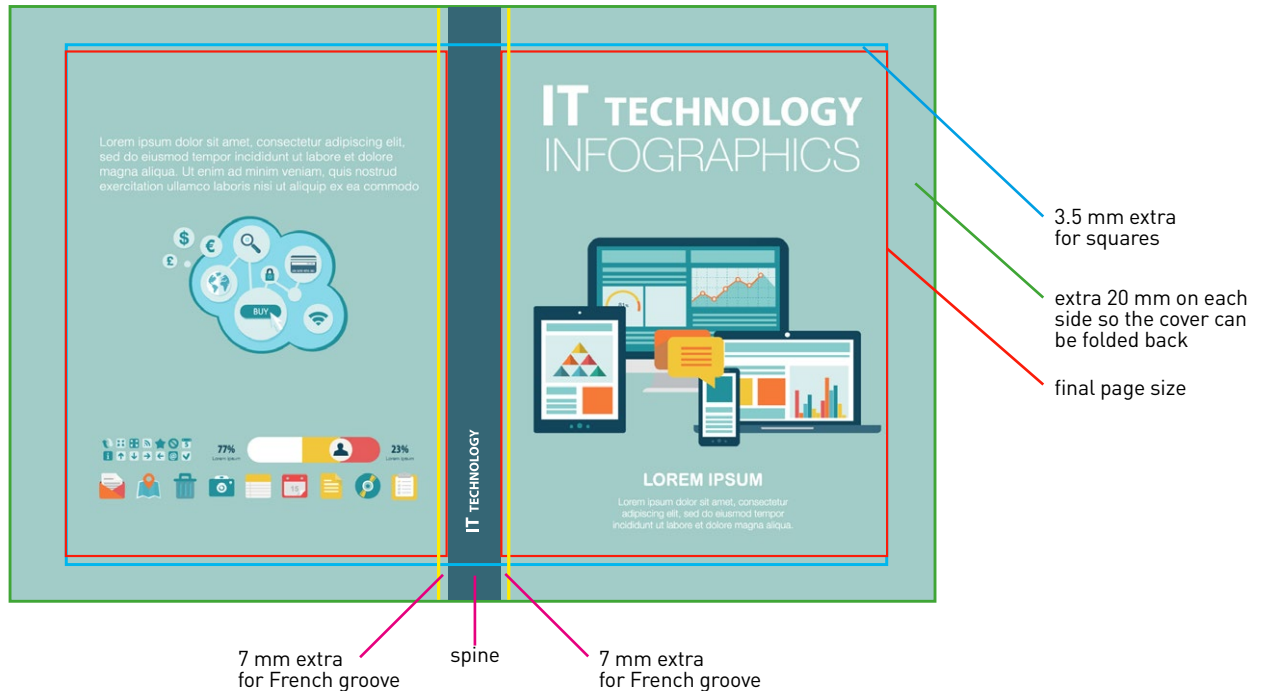
For this item the final dimensions of the cover will be larger than the inside pages.

Add an extra **20 mm on each side to the final dimensions to allow the cover to be folded back**. Finally, add **7 mm to the left and right of the spine for the French groove** and **3.5 mm above and below for the squares**.

PLEASE NOTE: with this binding type **the endpapers cannot be printed**.



Cover with case binding



E.g.:  
Final size = A4 (210 x 297 mm)  
14 mm spine

Send a file with the following dimensions: 488 x 344 mm.

→ width: 210+210+14 (spine) +20+20 (folded edge) +7+7 (French groove) = 488 mm

→ height: 297+20+20 (folded edge) +3,5+3,5 (squares) = 344 mm

