

HOW TO CREATE A PRINT-READY FILE:

SIDELINE BANNERS AND WALL-MOUNTED BANNERS

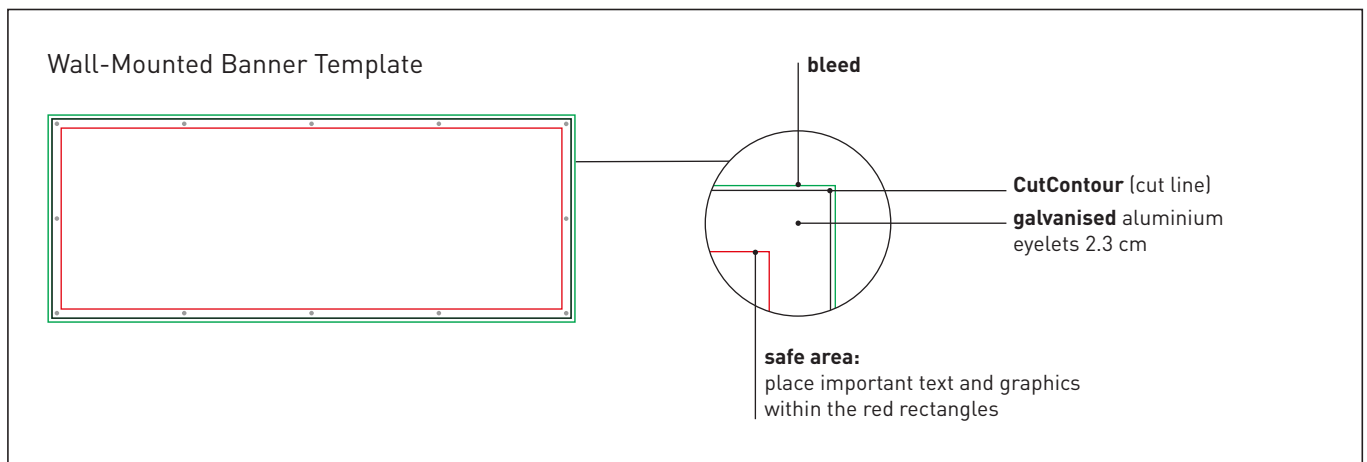
The following instructions will help you create a print-ready file. If after reading them you are still unsure about anything, please visit the **FAQ** section of our website, request a professional **File Check** or contact customer services.

1 FILE FORMAT

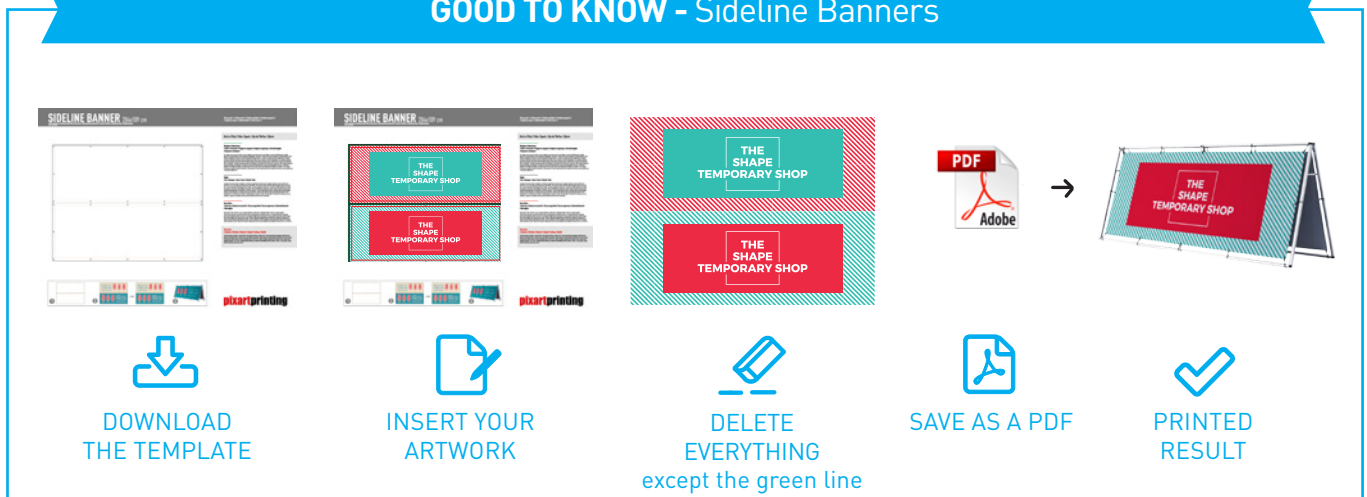
Send your file in **PDF format (not password protected)**.

2 TEMPLATE

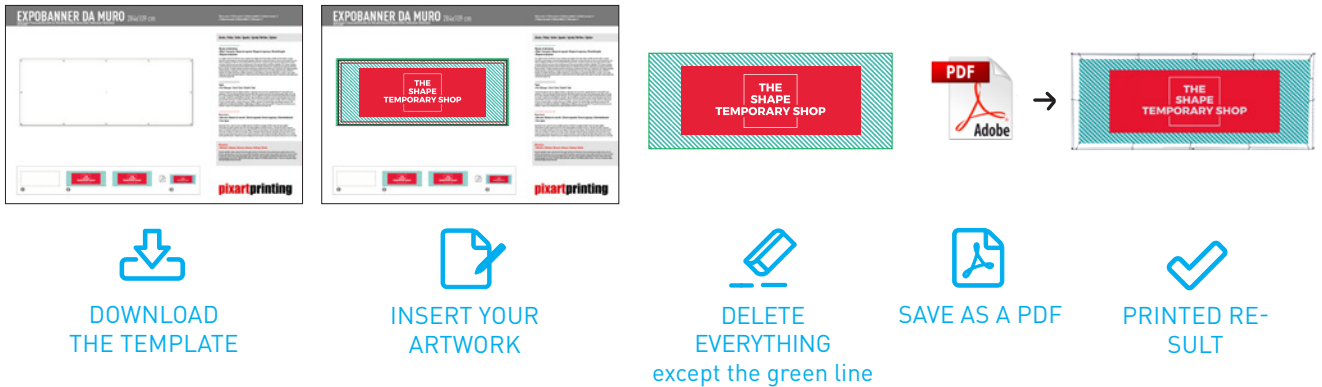
Download the template for your chosen product from the website and use it as the basis for your work: you will find the dimensions you gave when ordering, the bleed and other guidelines already correctly set up. Insert your artwork, **delete all guidelines except the green lines** and save the file as a high-quality PDF without crop marks.



GOOD TO KNOW - Sideline Banners



GOOD TO KNOW - Wall-Mounted Banners



3 COLOURS

All files should be sent in **CMYK** (cyan, magenta, yellow, black) format with **the Fogra 39 colour profile**.

Images in RGB or with PANTONE colours will be converted automatically using a standard colour separation profile. The same colour may vary slightly in appearance depending on the media onto which it is printed, as a result of the material's physical composition.


4 RESOLUTION

The optimal resolution for the print files is **between 100 and 150 ppi**.

5 ADDITIONAL INFORMATION

The minimum line width is 0.5 pt. **We do not advise placing frames and too close to the edges**, to avoid any inaccuracy due to the cutting tolerances.

GOOD TO KNOW

 **Important:** Do not position important graphics where the eyelets will be inserted.

