

INSTRUCTIONS FOR CREATING A PRINT-READY FILE - SEWN PAPERBACK BINDING

The following instructions are designed to help you create a print-ready file. If after reading them you are still unsure about anything, please download the template, visit the FAQ section of our website, request a professional File Verification or contact customer support.

1 FILE FORMAT

Our systems can only process files in PDF format and in 1:1 scale (not password-protected).

The PDF must be exported **without crop marks or registration marks**.

For the inside pages, the PDF should contain single pages and be in reading order. PDFs containing spreads will not be accepted.

For the cover, prepare a two-page PDF for the whole cover spread, with one page for the inside and one page for the outside (see point 7 for further details).

Once you have inserted the format and the number of internal sides, **the order form will automatically calculate the correct dimensions for the spine**.

Inside pages

single pages in reading order

spreads

Cover

two pages, one for the inside and one for the outside

separate pages, no cover spread

2 COLOURS

The same colour can appear slightly different on different media. This is due to the paper's physical composition. If you want a detailed comparison of the appearance of colour on the different types of paper available, you can order our paper sample pack and colour guide.

All files must be sent in CMYK (cyan, magenta, yellow and black), with a Fogra 39 colour profile.

Any images which are sent in RGB or in PANTONE colours will be automatically converted using a standard separation profile.

3 RESOLUTION

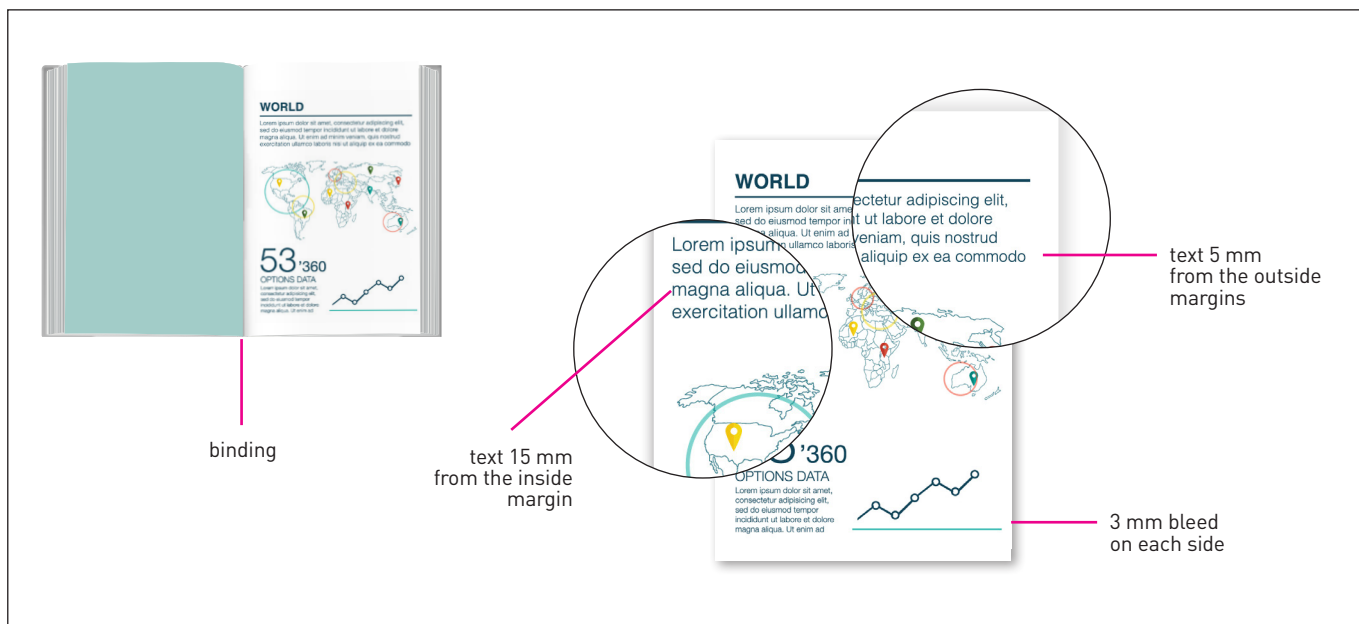
The optimal resolution for the print files is **300 dpi**.

4 FONTS AND OUTLINES

Fonts should be embedded in the PDF or converted into curves/outlines. The minimum font size (below which we cannot guarantee perfect print quality) is **6 pt**. The minimum printable line weight is **0.25 pt**.

5 MARGINS AND BLEEDS

Each page must have a **3 mm bleed on each side**. In addition, we recommend that all text is positioned at least 15 mm from the inside margin and 5 mm from the outside margins, to avoid it being difficult to read or too close to the binding.



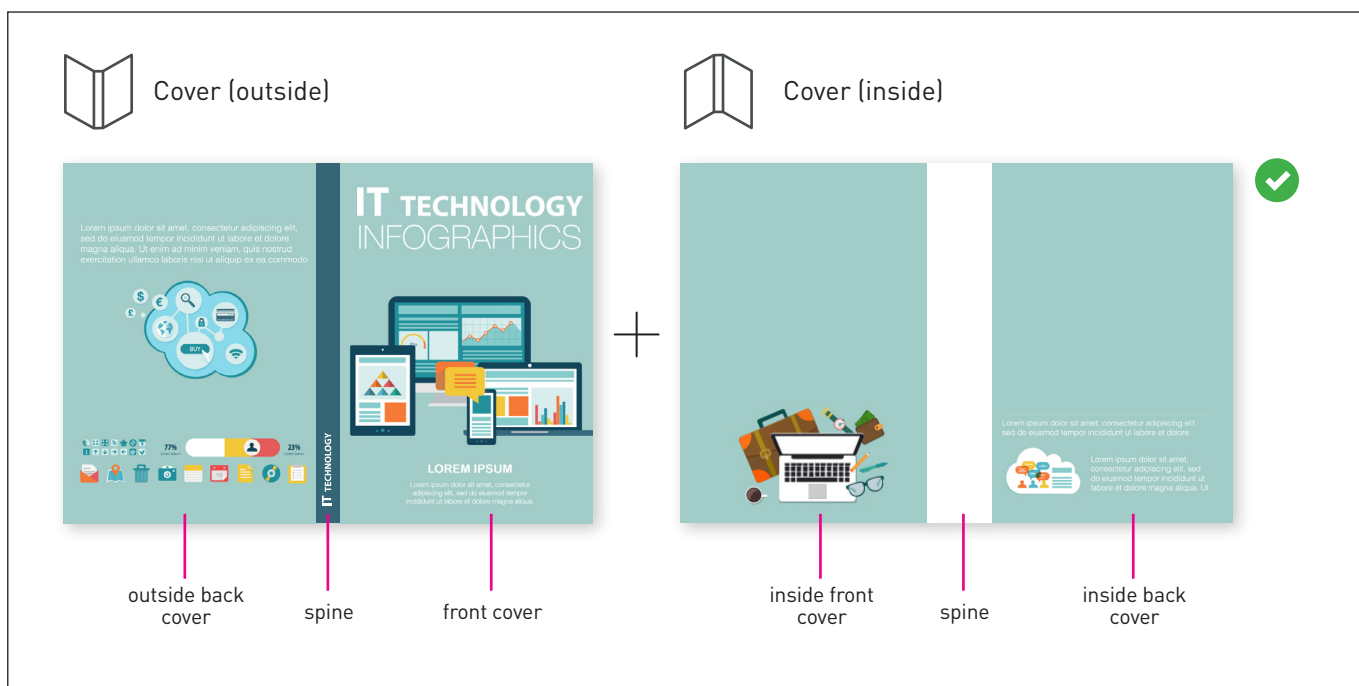
6 NUMBER OF SIDES AND PAGES

The number to give when ordering is the number of sides in the book, excluding the cover: each page has two sides, i.e. the front and back.

7 CREATING THE COVER

For the cover, prepare a two-page PDF for the whole cover spread, with one page for the inside and one page for the outside. Add a **3 mm bleed on each side**.

- **page 1 (outside):** place the outside back cover on the left, the front cover on the right, and the spine in the middle, with the dimensions given on the website. Save the file as a PDF.
- **page 2 (inside):** place the inside front cover on the left, the inside back cover on the right, and the spine in the middle, with the dimensions given on the website. Save the file as a PDF. **Important: leave a 3 mm white strip to the right and left of the spine** to allow perfect adhesion between the glue and the paper, and to avoid the book breaking when read.



Spine dimensions

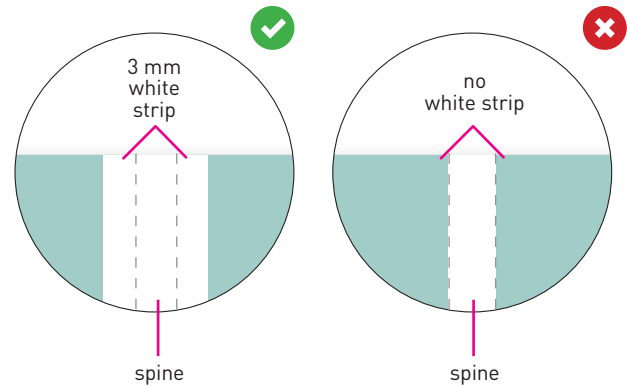
GET YOUR QUOTE		
Number of copies (min. 200 copies)	200	✓
Number of sides (min. 48 sides)	48	✓
Format	15 x 21 cm	✓
Spine (mm)	3.00	✓

Once you have inserted the format and the number of internal sides, the order form will automatically calculate the dimensions for the spine.

In the example shown above, the total dimensions of the document would be:
width: 150+150 mm + 3 mm (spine) + 3+3 mm (bleed) = 309 mm | height: 210 mm + 3+3 mm (bleed)= 216 mm

Gluing

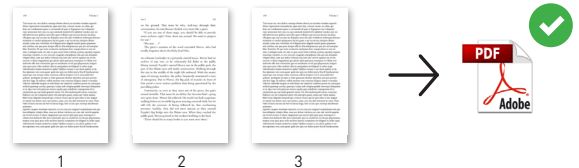
To ensure the book is glued perfectly, the spine area between the inside front and back covers should be left blank, and a 3 mm white strip should be added to the right and left of it.



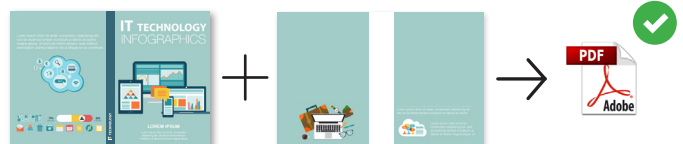
GOOD TO KNOW - Sewn binding

🔑 Bleed: 3 mm on each side.

🔑 Inside pages: send a PDF file containing single pages in the correct order.



🔑 Cover: send a two-page PDF for the whole cover spread, with one page for the inside and one page for the outside.




🔑 Export the PDF without crop marks or trim lines.



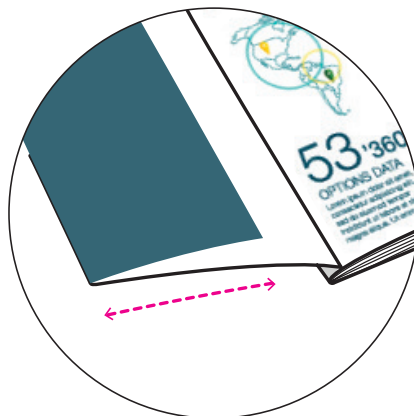
8 COVER WITH FLAPS

If you have chosen the option of a cover “with flaps”, the dimensions of the flaps depend on the format of the book. They can range from a minimum width of 10 cm to a maximum width of 19.5 cm. Add the flaps to the cover spread, one on the left and one on the right, as shown in the diagram below, and check the table for the dimensions of the flaps.

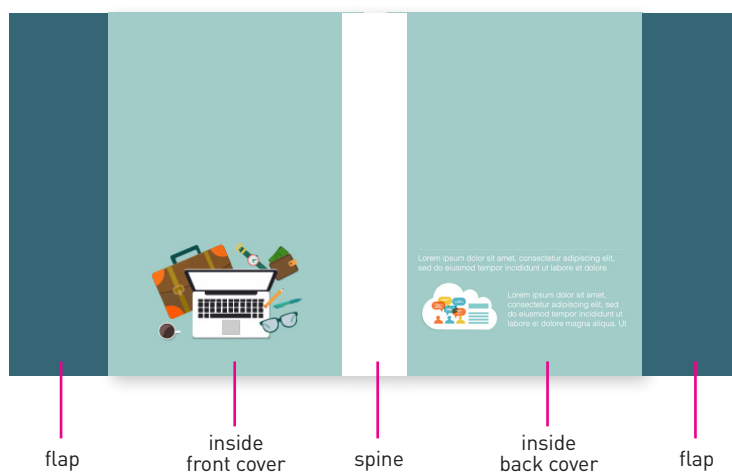
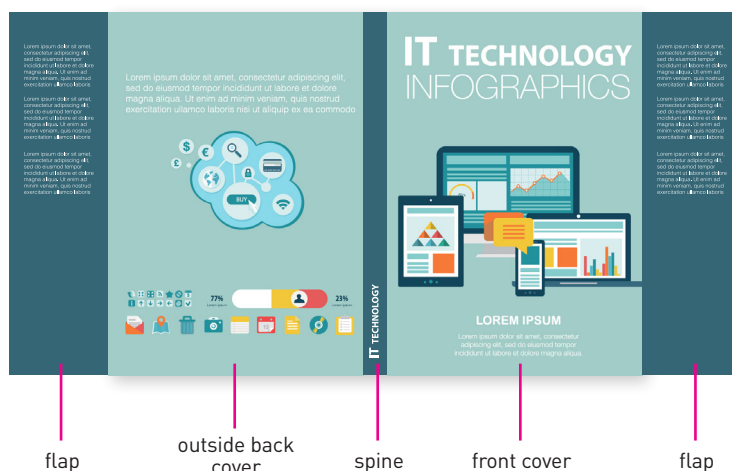
Flap dimensions (in cm)



FORMAT	MIN	MAX
15x21	10	13.5
16.5x24	10	15
21x21	10	19.5
21x29.7	10	19.5



Cover with flaps

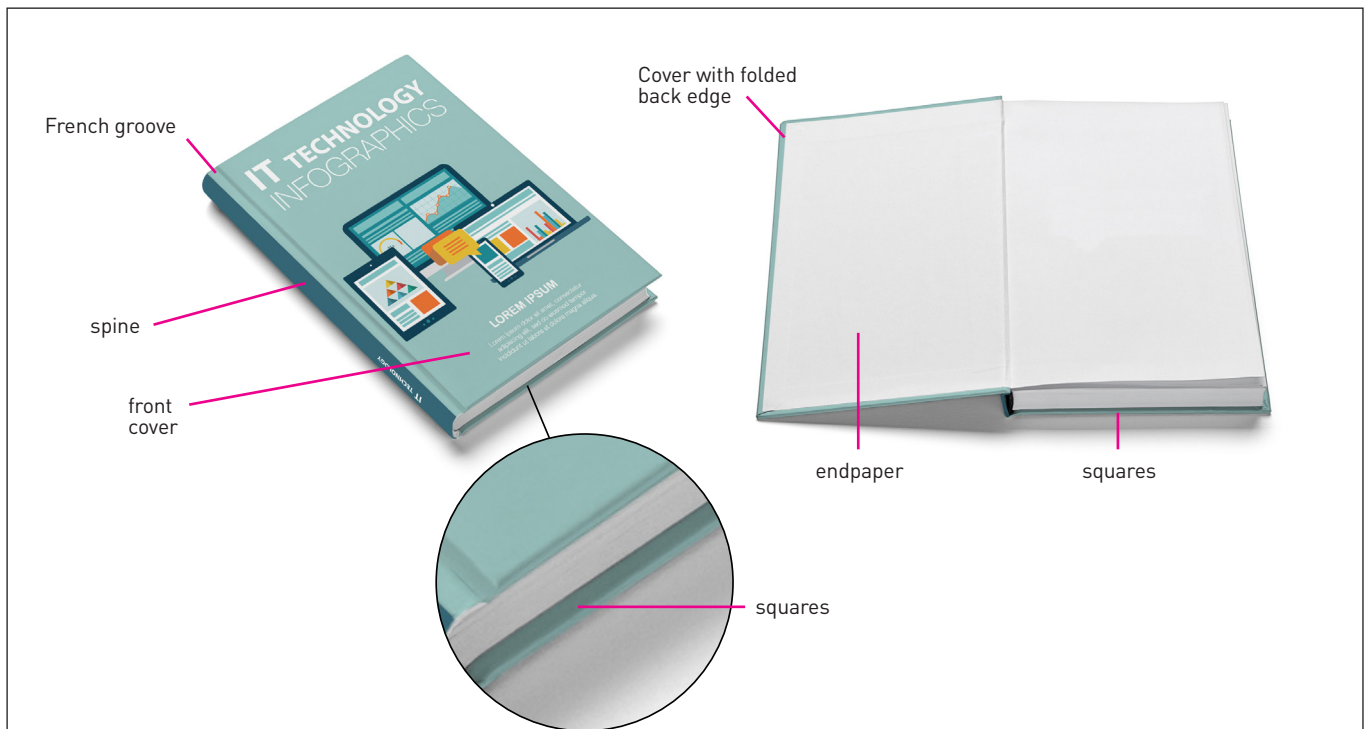


9 CASE BINDING

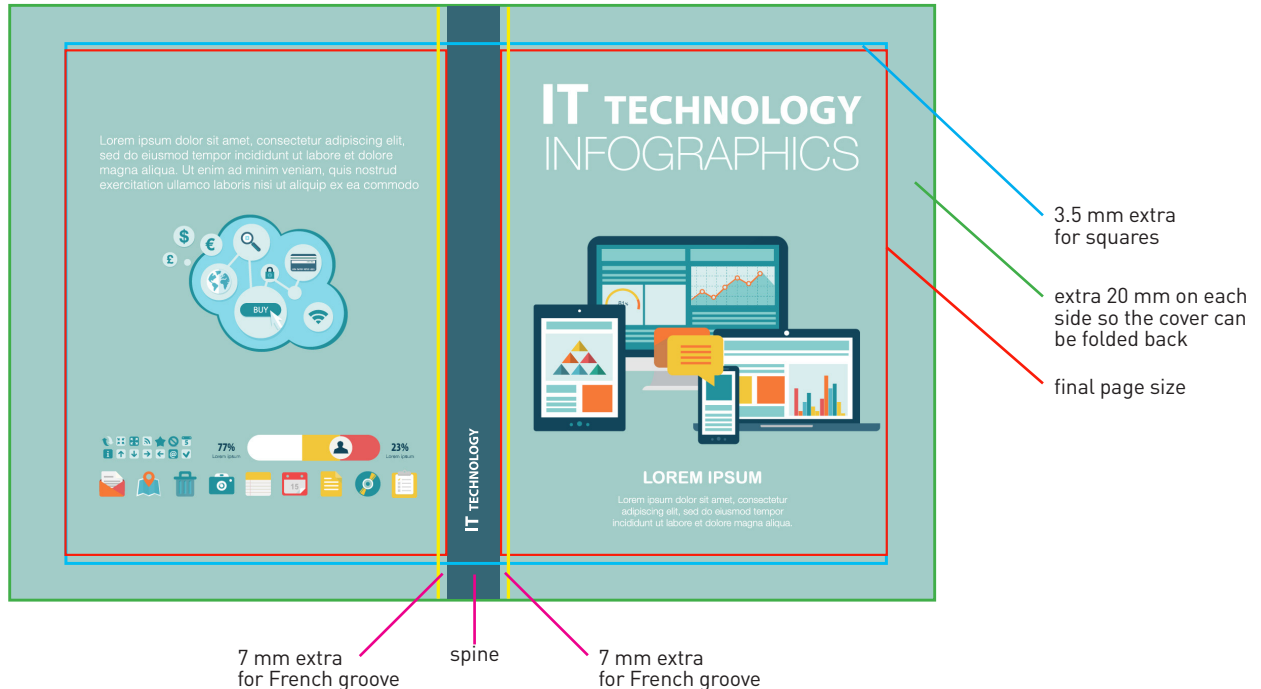
For this item the final dimensions of the cover will be larger than the inside pages.

Add an extra **20 mm on each side to the final dimensions to allow the cover to be folded back**. Finally, add **7 mm to the left and right of the spine for the French groove** and **3.5 mm above and below for the squares**.

PLEASE NOTE: with this binding type **the endpapers cannot be printed**.



Cover with case binding



E.g.:
Final size = A4 (210 x 297 mm)
14 mm spine

Send a file with the following dimensions: 488 x 344 mm.

→ width: 210+210+14 (spine) +20+20 (folded edge) +7+7 (French groove) = 488 mm

→ height: 297+20+20 (folded edge) +3,5+3,5 (squares) = 344 mm